



Whilst every effort is made to give a fair description, the accuracy of these particulars is not guaranteed, neither do they constitute an offer or contract.

**MATHESONS ESTATE AGENTS** have not tested any apparatus, equipment, fitting or services and so cannot verify that they are in working order. The buyer is advised to obtain verification from their solicitor or surveyor. Measurements are correct to within +/-6 A sonic tape is used. None of the statements contained in these particulars or any of our properties are to be relied upon as a representation of fact.

## St. Marys Road, London, NW10 4AT

### Asking Price £380,000 Leasehold - Share of Freehold



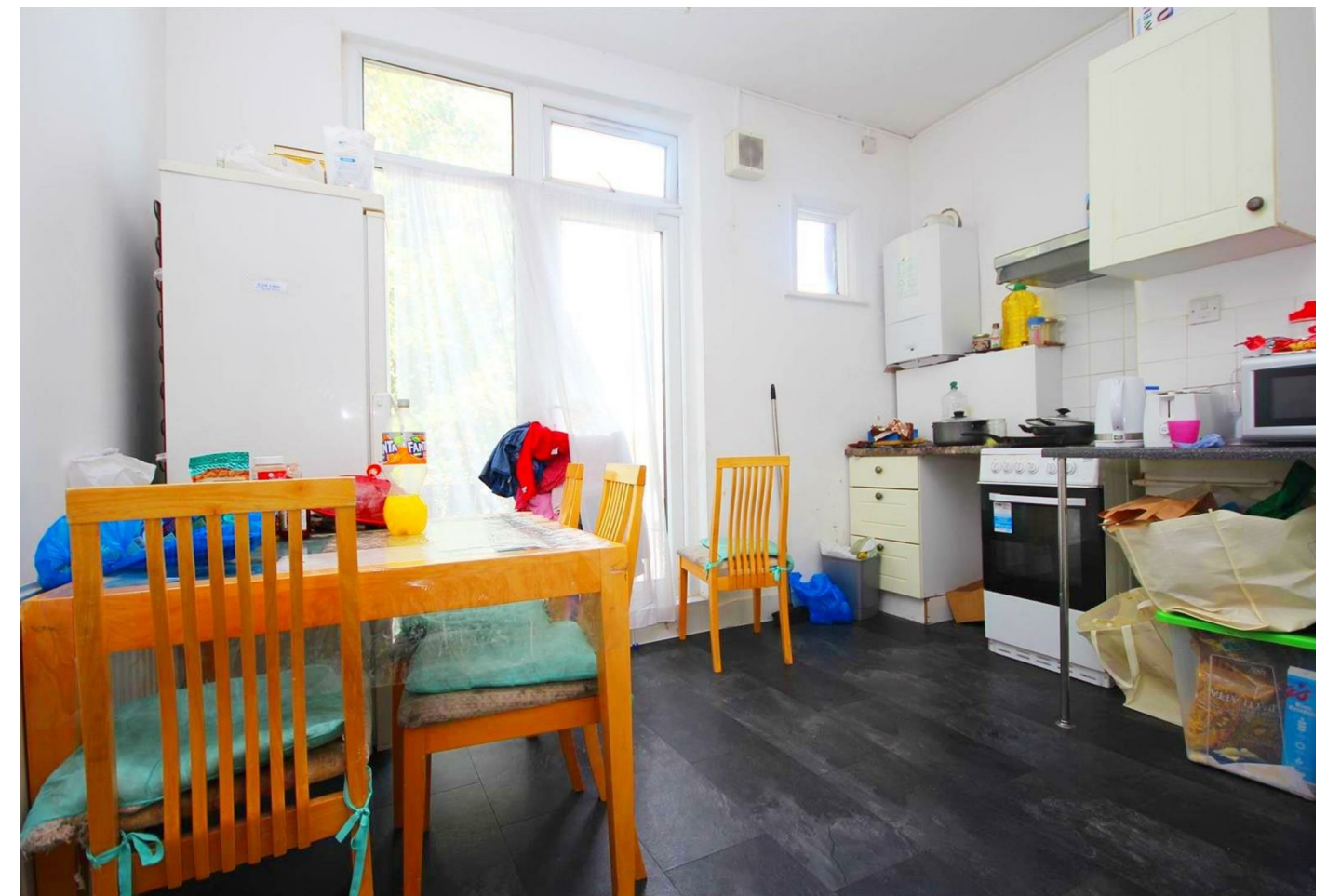
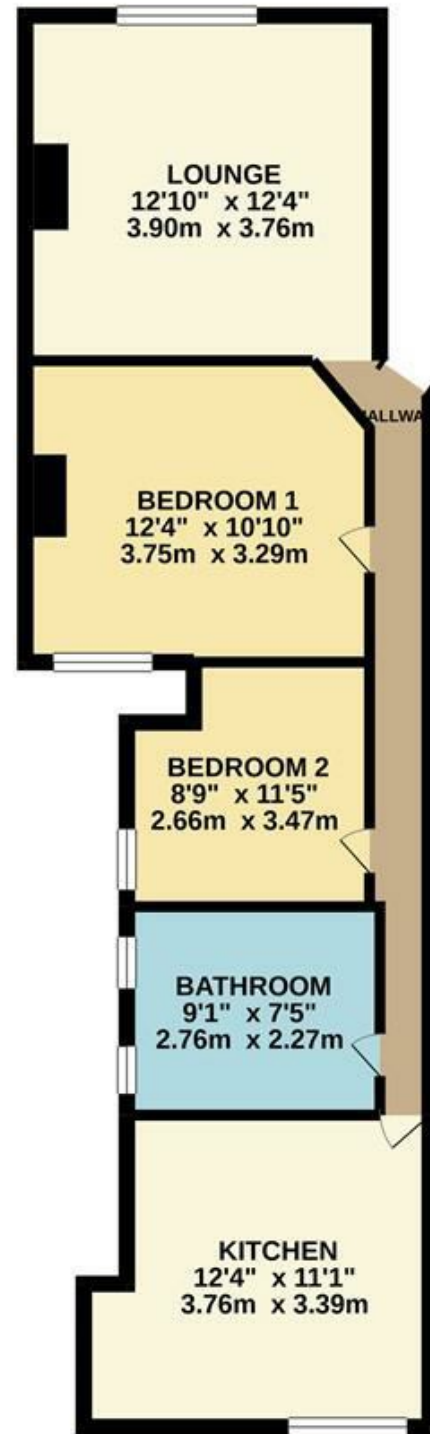
#### KEY FEATURES:

- TOP FLOOR FLAT
- TWO DOUBLE BEDROOMS
- NO UPPER CHAIN
- INTERCOM SYSTEM
- SPACIOUS THROUGHOUT
- IDEAL FOR THE FIRST TIME BUYER
- INVESTMENT ON A BUY TO LET
- CLOSE TO TOWN CENTRE
- SHARE OF FREEHOLD

CHURCHILLMATHESONS are offering this SPACIOUS TOP FLOOR TWO BEDROOM FLAT. The property benefits from no upper chain complications, within walking distance to the Town Centre and easy access to transport links including Harlesden Station (London Overground & Bakerloo Line - Zone 3) & Willesden Junction Station (London Overground & Bakerloo Line - Zone 2 & 3), TWO DOUBLE BEDROOMS, SHARE OF THE FREEHOLD. An internal viewing recommended.

The property comprises of; Entrance Hall, Lounge, Kitchen/Diner, Two Bedrooms, Family Bathroom.  
The total floor area is approximately 67 SQ/M.

SECOND FLOOR  
602 sq.ft. (55.9 sq.m.) approx.



TOTAL FLOOR AREA : 602 sq.ft. (55.9 sq.m.) approx.  
Whilst every attempt has been made to ensure the accuracy of the floorplan contained here, measurements of doors, windows, rooms and any other items are approximate and no responsibility is taken for any error, omission or mis-statement. This plan is for illustrative purposes only and should be used as such by any prospective purchaser. The services, systems and appliances shown have not been tested and no guarantee as to their operability or efficiency can be given.  
Made with Metropix ©2020